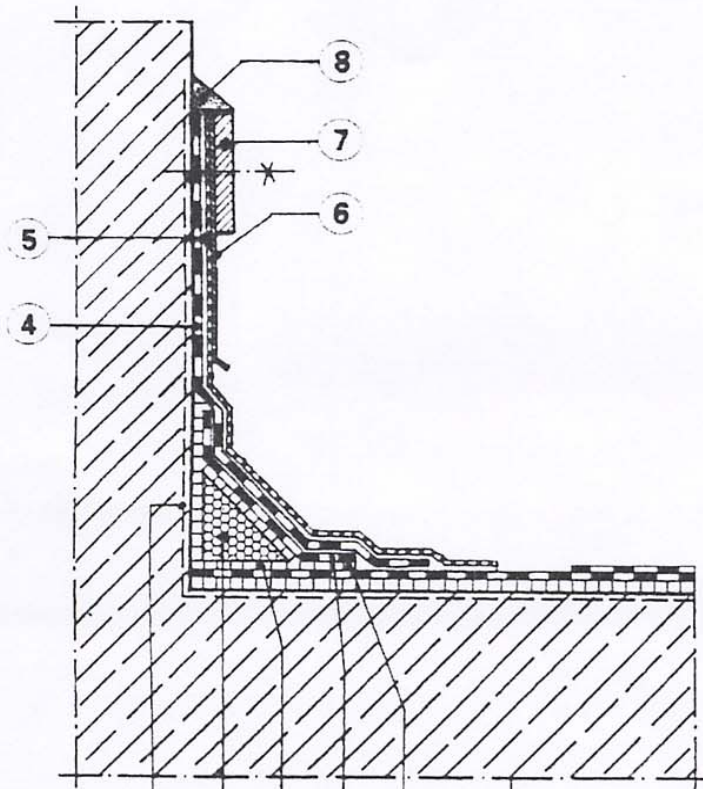
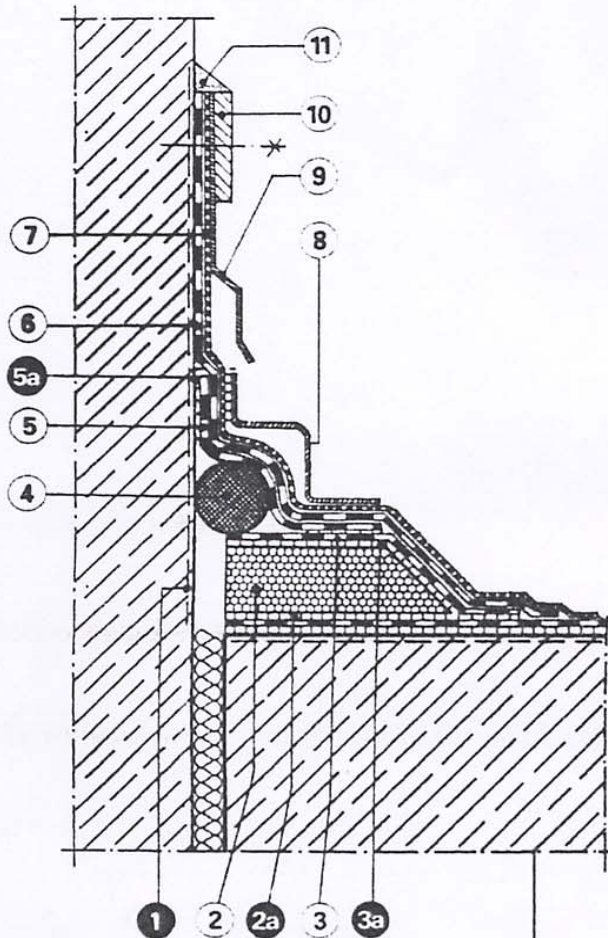


WIROBIT- Detail 9.2



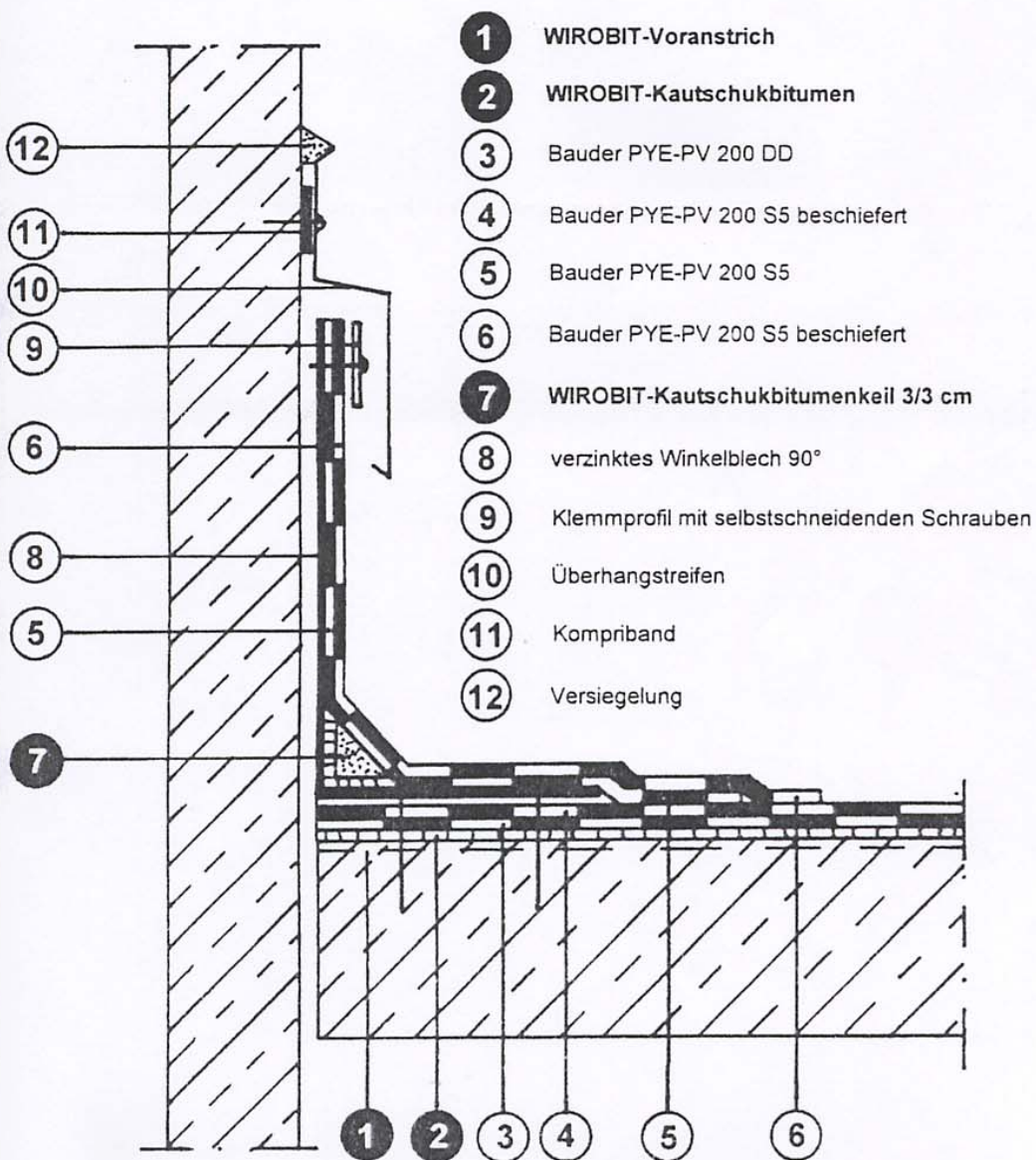
- | | |
|----|--|
| 1 | WIROBIT-Voranstrich |
| 2 | WIROBIT-Kautschukbitumenkeil 3/3 cm |
| 2a | WIROBIT-Kautschukbitumen |
| 3 | Bauder PYE-PV 200 S5 |
| 3a | WIROBIT-Kautschukbitumen |
| 4 | Bauder PYE-PV 200 S5 |
| 5 | Bauder Plant E |
| 6 | Schutzblech |
| 7 | Anpreßschiene |
| 8 | Versiegelung |

WIROBIT- Detail 9.4

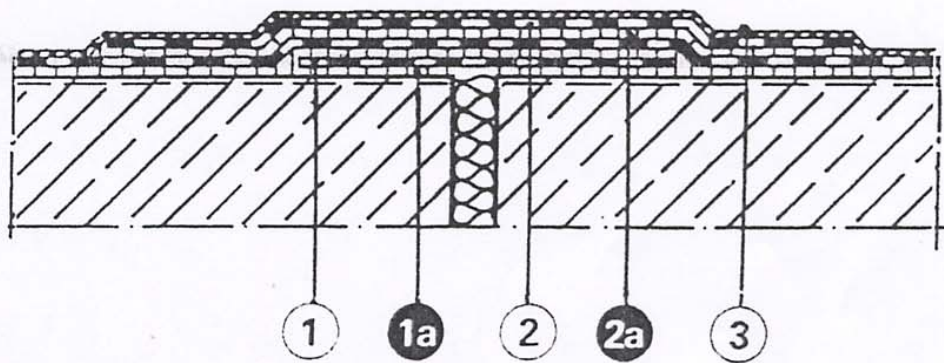


- 1** WIROBIT-Voranstrich
- 2 Schaumglastrapez 13/4/9 cm
- 2a** WIROBIT-Kautschukbitumen
- 3 Bauder G 200 DD
- 3a** WIROBIT-Kautschukbitumen
- 4 Schaumstoff-Rundprofil
- 5 Bauder PV 200 DD
- 5a** WIROBIT-Kautschukbitumen
- 6 Bauder PYE-PV 200 S5
- 7 Bauder Plant E
- 8 Schutzblech
- 9 Abdeckblech
- 10 Anpreßschiene
- 11 Versiegelung

WIROBIT- Detail 9.4a

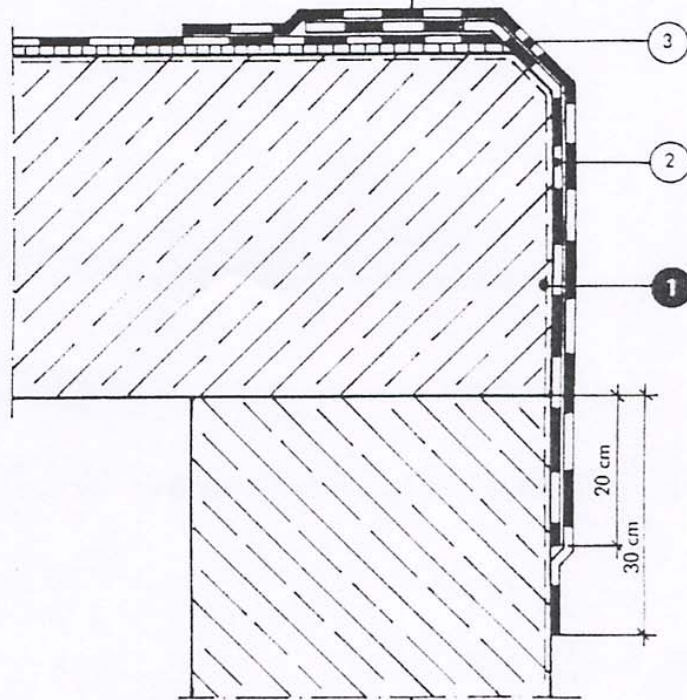


WIROBIT- Detail 9.6



- ① Bauder PYE-PV 200 DD
- ①a **WIROBIT-Kautschukbitumen**
- ② Bauder PYE-PV 200 DD
- ②a **WIROBIT-Kautschukbitumen**
- ③ Bauder Pflanzschwarte

WIROBIT- Detail 9.7



- 1** WIROBIT-Voranstrich
- 2 Bauder PYE-PV 200 S5
- 3 Bauder PYE-PV 200 S5 beschiefert